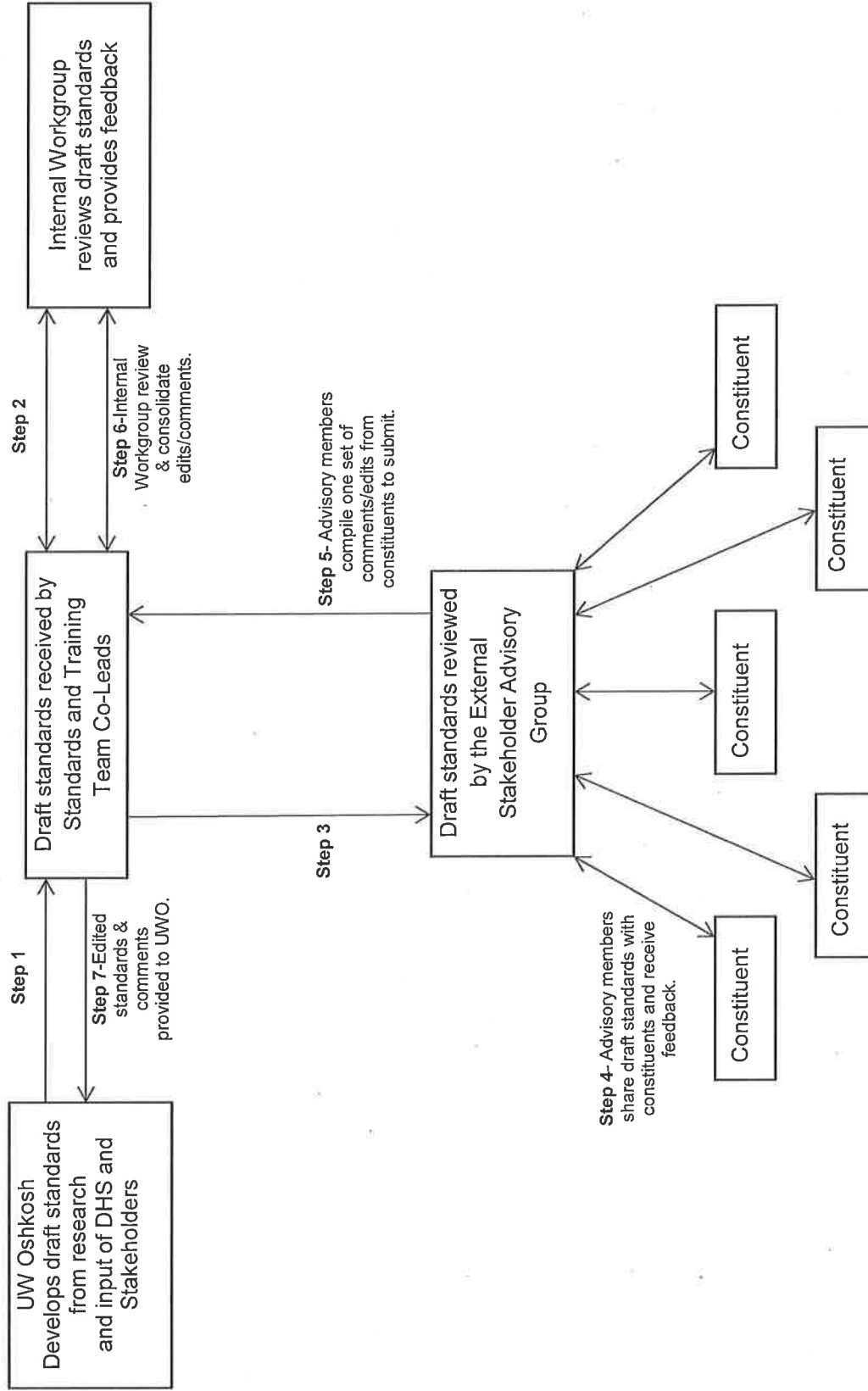


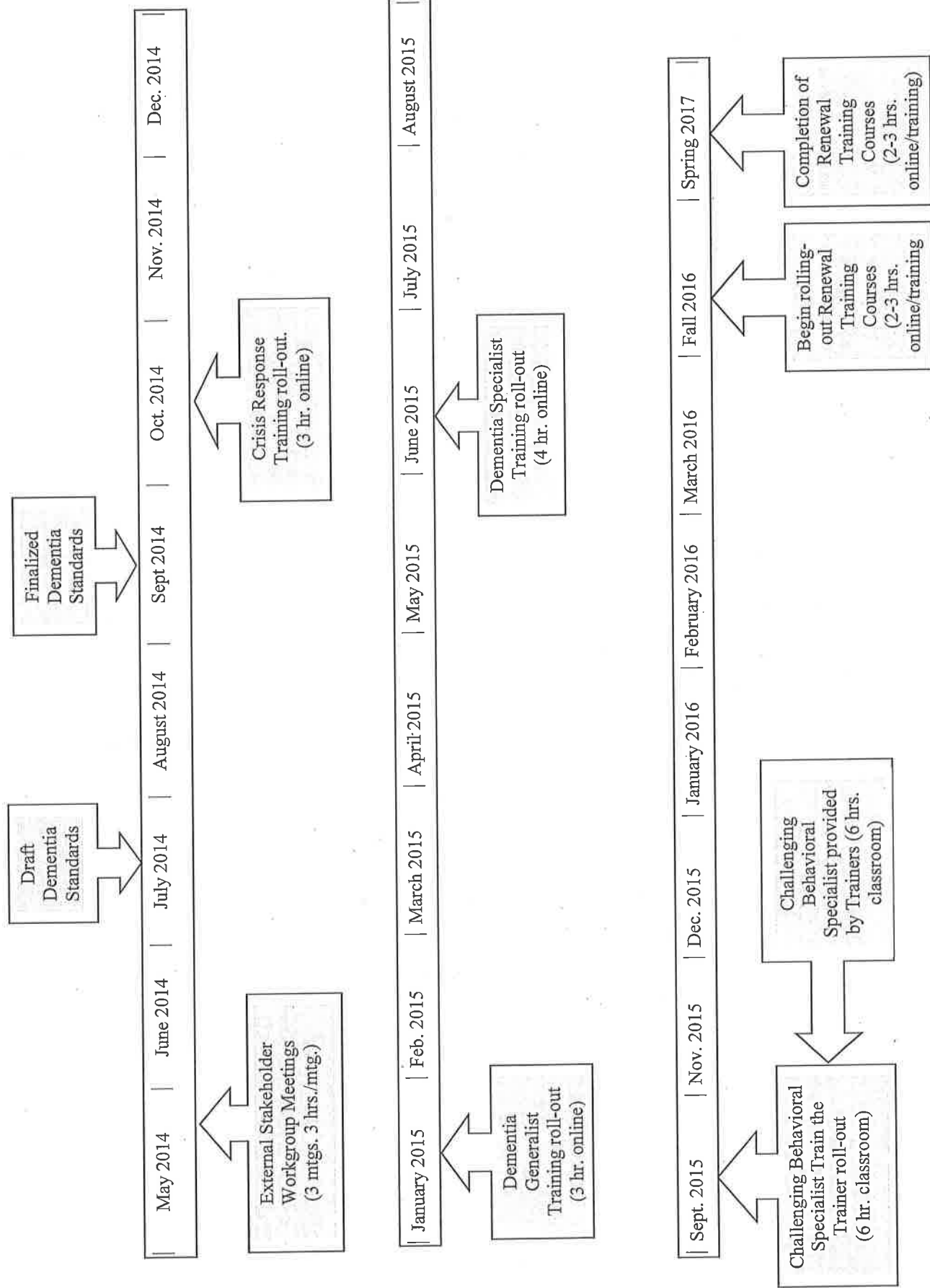
Source: Department of Health Services-- May 13, 2014.

Draft Process for Review of Dementia Care Standards* May 5, 2014



*Department leaders have final approval.

Standards & Training Timeline (Specific to UWO Contract)



Dementia Capable Wisconsin Tier One Training Intended Audience 5/6/14

Introduction to Dementia
(Part I of each Tier One course)

Crisis Response

Any agency personnel likely to be called upon when a person appears to pose a danger to oneself or others. For example:

- Law enforcement
- Judiciary/Court officials
- Fire/EMS
- Dispatchers
- County APS
- Health care facilities including ER staff
- Spiritual leaders

Dementia Generalist for Health Care Providers

- Nursing homes
- Assisted living
- Home health, hospice, hospital
- Health plans, Family Care MCOs, ADRC staff

Dementia Generalist for Family/Friends

- Family caregivers
- Family members
- Friends

Does not meet prerequisite for Tier Two Specialist Course.

Dementia Generalist for Community Members

- Retailers/Banks
- Restaurants
- Public/government workers
- Spiritual/community groups

Does not meet prerequisite for Tier Two Specialist Course.

- Each Tier One course begins with Part I: Introduction to Dementia
- Part II of each Generalist course is specific to the role indicated in the course title
- There is no prerequisite for taking the Tier One courses
- Learners (Crisis Response, Dementia Generalist for Health Care Providers) who successfully complete a Tier One course are eligible to take Tier Two Specialist Courses
- There is a fee for each course
- The names of learners who successfully complete a Tier One course will be entered on a registry maintained by UW Oshkosh (except Generalist for Family/Friends and for Community Members)